

Panasonic

Commercial Microwave Oven

NE-2157

PRO I SERIES



- 2100 Watts* of cooking power
- Compact size, heavy-duty performance
- Stainless steel construction
- Top and bottom energy feed
- "Grab & Go" door handle
- Programmable memory pads
- Enhanced diagnostics

*Ideal for full and quick service restaurants,
supermarkets, delis and convenience stores*

* I.E.C. 705-88 Test Procedure



ISO 14001
A8673



091-A



<http://www.panasonic.com/cmo>

Pro



NE-1021



NE-1051



NE-1056

Pro I



NE-1257/NE-1258



NE-1757



NE-2157



NE-2180



NE-3280



- 2100 Watts* of power
- 2 magnetrons (heating elements)
- Top and bottom energy feed
- "Grab & Go" door handle
- Large oven capacity: 0.6 cubic feet only 16 5/8" wide
- Chef technical support
- Fits one 6" tall, half size steam table pan with cover
- Programmable memory pads
- 3 power levels
- 3-stage cooking
- Enhanced diagnostics
- Cycle counter
- "One touch" start feature
- Programmable lock
- Easy to clean air filter with reminder
- Stainless steel cabinet & cavity
- Patented safety door seal system
- See-through oven door
- Removable ceiling splatter shield
- Digital display
- Stackable
- Only 68 lbs.
- Will ship via UPS

NE-2157 2100 Watt* Commercial Microwave Oven

Technical Specifications

Power source: 208/230-240V, 60Hz, Single phase

Receptacle required: NEMA 6-20R



Frequency: 2,450MHz

Required power: 208: (16.6A); 230-240: (15.3A)

Output*: 2100 Watts

Outer dimensions: 16 5/8" w x 20" d x 13 3/8" h

Cavity dimensions: 13" w x 12" d x 6 7/8" h

Net weight: 68 lbs.

Shipping weight: 73 lbs.

Shipping box size: 19 1/8" w x 24 1/8" d x 16 7/8" h, 4.7 ft³

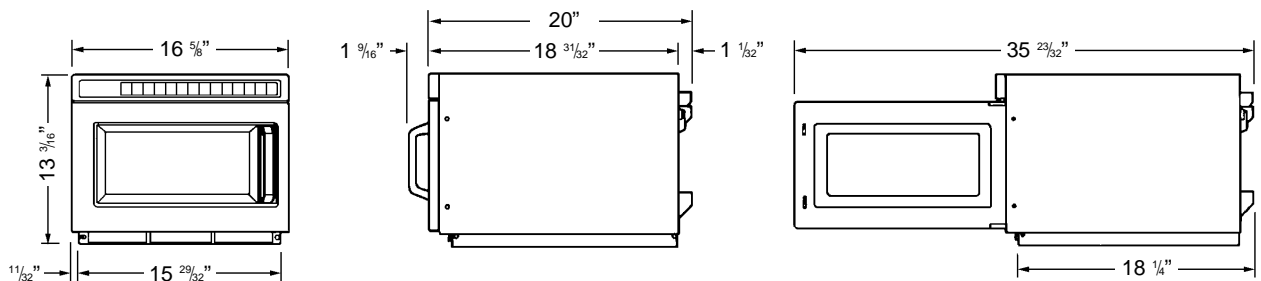
Timer: Maximum programmable times for each stage of cooking — Hi and Med. power=15 minutes
— Defrost=30 minutes

To specify a Panasonic Commercial Microwave Oven:

The NE-2157 Commercial Microwave Oven meets or exceeds all safety performance and sanitation standards set for commercial food service microwave ovens by: UL, HHS, FCC and NSF.

Plus, oven shall have output power 2100 Watts*, top and bottom energy feed, Grab & Go door handle, patented safety door seal system, programmable memory pads, 3-stage cooking, 3 power levels (HI, MED., DEF.), digital display w/countdown, programmable lock, self-diagnostics, oven cycle counter, stackable, video training and Chef/Test Kitchen technical support.

* I.E.C. 705-88 Test Procedure. Specifications subject to change without notice.



Panasonic

Panasonic Home and Commercial Products Company
Commercial Foodservice Division
One Panasonic Way, Panazip 4A-4, Secaucus, NJ 07094
TEL: (201) 348-5377 FAX: (800) 553-0384
<http://www.panasonic.com/cmo>